

STRIVE FOR HIGHER THINGS



One Tree Hill
COLLEGE

May 2015

The Education Review Office (ERO) is the government department that evaluates and reports on the education and care of students in schools. Most recently ERO has reported on One Tree Hill College in 2012 and 2015. Here are some of the highlights from the outstanding 2015 ERO Report:

- "One Tree Hill College successfully places high value on students becoming connected and engaged with their learning."
- "High expectations for student achievement and good quality learning programmes..."
- "Key competencies and values education, alongside achievement, continue to be emphasised as important outcomes in the school's learning processes."
- "Junior students adjust to secondary school learning through a strong sense of belonging."
- "Pastoral care is highly effective. The school tone is supportive of all students..."
- "Very good quality relationships are acknowledged as the basis for effective learning."
- "Students talk meaningfully and positively about their learning experiences."
- "Leaders share strategies to promote best teaching practice..."
- "One Tree Hill College has developed positive and useful relationships with local primary schools."
- "...the school environment continues to be successfully developed, well managed and attractively maintained."
- "One Tree Hill College is using achievement information very well to make positive changes to learners' progress and achievement."
- "The college makes very good use of achievement data to improve students' engagement and connection with their learning."
- "Achievement information for Years 9 and 10 indicates that students make good progress in literacy and numeracy..."
- "School leaders and faculty heads strategically drive the curriculum towards student-centred choices"
- "There are extensive opportunities for students at all levels to develop their leadership skills."
- "A key intervention for Years 9 and 10, to promote accelerated progress is the reading enrichment programme."
- "The school is effectively promoting educational success for Māori students."
- "The concept of akonga is evident in teachers' practice and creates a work culture based on reflection and the sharing of ideas."
- "The school's Māori Advisory Group is an example of a highly effective learning partnership working to lift student engagement and academic performance."
- "Pacific students have their learning enhanced with a strong focus on Pacific pride..."
- "The school's pathways focus is very strong and capably led..."
- "Self review of curriculum delivery is effective and thorough within departments."
- "Effective self review processes are functioning at all levels of school systems and bring about appropriate, cyclical change."
- "The school is very well placed to sustain and improve its performance."
- "ERO is likely to carry out the next review in four-to-five years."

The full report is also available for viewing by either calling into the College's reception or by visiting our website: www.onetreehillcollege.school.nz



Welcome to One Tree Hill College.

The crest of One Tree Hill College, adopted before the College opened on 1 February 1955, symbolises the strong association between One Tree Hill/Maungakiekie and the local community.

It contains a depiction of the obelisk dedicated to “the Māori race” below which is the grave of the father of modern Auckland, Sir John Logan Campbell (1817–1912). On the crest above the obelisk is depicted the Southern Cross.

The tree shown is not the pine removed in recent times but a symbolic young totara growing “courageously towards the skies”, according to the foundation principal Mr Ron Stacey. It is symbolic of a large totara, Te Totara-i-ahua (Ceremonial Totara), that stood on the summit for some 200 years until 1852. Mr Stacey wrote in 1955: “We look upwards towards the summit of Maungakiekie where all that is finest in both Māori and Pakeha is commemorated for ever in stone and bronze.” Mr Stacey saw the crest and its Latin motto, “Ad Altiora Contende” (“Strive For Higher Things”), as a merging of the old world of Europe with the new world of the Pacific.

“Ad Altiora Contende” frequently carries the Māori translation, “Whaia e Koe te iti Kahurangi”, to symbolise the shared history of One Tree Hill/Maungakiekie and the partnership of Māori and Pakeha under the Treaty of Waitangi.

A red band was added to the crest in 1999 but the crest has otherwise remained unchanged in the College’s history. It was retained when the former Penrose High School introduced its new name, One Tree Hill College, on 21 July 2008.





From the Principal

Thank you for taking an interest in what we do at One Tree Hill College, a co-educational, secondary school, located in central Auckland, close to transport services and surrounded by lovely park-like grounds.

One Tree Hill College has a very special reputation within the New Zealand education system as a school that meets the needs of its students. High standards of academic performance are achieved and the full variety of college life is enjoyed. Students are encouraged to develop as self-motivated, mature, young people who are being prepared to contribute to society as respectful, caring citizens.

The College was opened in 1955 and we are proud to have provided over 60 years of quality secondary education in our community. We are a well established school with brand new, modern facilities. Students attending One Tree Hill College receive a complete education with an emphasis on academic, cultural and sporting excellence. A full range of academic courses are offered through to NCEA Level 3 and Scholarship. Our whānau based pastoral care programme ensures that every student is cared for in a sensitive and positive environment.

The College insists on high standards of behaviour and discipline. Anti-social behaviour is not tolerated, and this creates a very positive and safe learning environment. The students wear uniform at all levels and the expectation is that it is worn well and with pride. The teaching staff are very committed to the students in their care. We focus on establishing a partnership between the student, the teacher

and the family to ensure that, together, the most effective learning takes place. The staff are there to ensure that the student's potential is achieved and that their expectations are high. Staff take an active part in the various wider aspects of college life so that there are opportunities for students to follow their interests.

One Tree Hill College offers a full programme of sporting and cultural pursuits with several teams having achieved national success. We are involved in the various cultural festivals and have our own cultural celebrations. Students learn to work with others in pursuit of learning and understanding. We are a college where students feel an identity and a sense of belonging.

The College has an extensive wireless computer network and the students have access to the very latest in educational and productivity software. There is also a superb art collection which enhances the college's environment. Students enjoy the richness of the programmes that we offer. One of the main advantages of One Tree Hill College is that, although we are close to Auckland City, we have very large sports fields, two gymnasiums and park-like student lunch areas amid mature trees.

I invite you to visit us so that you can experience the outstanding qualities and facilities that make One Tree Hill College such a special and unique place.

Ad Altiora Contende

Nick Coughlan
Principal

The Board of Trustees



Darryl Follows – Board Chair Darryl_Follows@bnz.co.nz

Darryl has significant banking and finance experience obtained over a 32 year career, the last 20 with BNZ in a number of roles including business banking, credit, lease and asset financing. Darryl has been associated with One Tree Hill College for 8 years. His eldest son graduated in 2015, Darryl still has a daughter at the school. Darryl has a very strong interest in sport having held roles with both Swimming New Zealand and Auckland Rugby and is currently manager for a premier team in the Auckland club rugby competition.



Max Guptill – Deputy Board Chair DipMin BSW PGDipProfSupv
max.guptill@mcct.org.nz

Max has been involved in school governance for the last 13 years on a local Primary School board. Max is a carpenter by trade, a social worker by profession and a paster by choice. Many students will recognise Mr Guptill from coaching sport at One Tree Hill College, an involvement that Max has had with the college since 1998. Max has a passion for young people achieving to their greatest potential and making good life choices and currently has a daughter attending the College.



Derek Anderson BE MNZIM danderson@alsco.co.nz

Derek is a graduate of University of Auckland and has an extensive background in manufacturing management in a variety of industries. Derek has been actively involved in Ellerslie School on a number of levels whilst his sons attended the School. Derek is involved in both college and club football as a referee and coach. Derek has two sons currently attending the College.



Dagmar Dyck PG Dip FA, Grad Dip Tchng dagmarvdyck@gmail.com

A graduate from Elam School of Fine Arts, Dagmar has maintained a professional artist practise spanning over 20 years. Since completing her Graduate Diploma in Teaching in 2009, Dagmar has merged her skills and is passionate about empowering her students at Sylvia Park School in and through the platform of the arts. She enjoys coaching and managing various sports teams, including One Tree Hill College's girls rugby, netball and touch teams. Dagmar has one daughter currently attending the school.



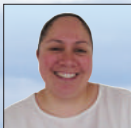
Mark Leadbetter BBS (Accg), Dip Bus Admin (Fin), CA, MInstD markl@xtra.co.nz

Mark spent 19 years working for international accounting firms in London and Auckland encompassing training, technical and auditing roles and more recently running his own business. Mark has been on the Bailey Road School Board for the past 6 years and has a daughter at One Tree Hill College.



Rob McKnight rob@mcknight.co.nz

Rob is an experienced company director, having worked within both the commercial and not-for-profit sectors. Rob runs his own business specialising in project and contract management within the property sector. Rob believes in quality, appropriate, well-resourced and well delivered education by outstanding teachers, as a cornerstone for young people to get the most out of life. Rob has a daughter at One Tree Hill College.



Desiree Hughes BScSc, GradDipTchg dhughes@onetreehillcollege.school.nz

Desiree is a graduate of The University of Waikato specialising in NZ History and te reo Māori me ōna tikanga. Prior to moving to Auckland, she held multiple management positions within Libraries and Information Management. Since joining the staff in 2008, Desiree has predominately taught within the Social Sciences Department and has a leadership role in History. Her role as Hināu Whānau Leader is a continuance of her commitment to empowering young rangatahi to become better versions of themselves. Okea ururoatia!

The Board of Trustees also includes the Principal and a Student Trustee.

\$18m Property Redevelopment

The Ministry of Education has completed a \$18 million property redevelopment programme in our college over the last 10 years. This is one of the largest developments ever made to an existing school and has resulted in the modernisation and upgrading of our facilities. This is an exciting time as One Tree Hill College continues to assist students in realising their potential through a vastly improved learning environment.

The key property improvements that have enhanced teaching and learning include: a purpose built Knowledge Centre equipped with wifi technology and flexible workstations to reflect the inclusion of the wired world of the twenty-first century in the library's traditional function; modern science laboratories and classrooms; a high specification ICT school wide wireless network; purpose built commercial kitchen and art rooms; a second gymnasium; dedicated music suites; marae; auditorium; and four custom designed Whānau areas for student use and open plan learning spaces.



Introducing Our College

Staff

Teaching, office, grounds, caretaking and ancillary staff are part of a team of over 100 who serve our students and the community. Teachers appointed to One Tree Hill College are well qualified and enthusiastic about their subject and about teenagers. They involve themselves in the very active life of the College and participate in many co-curricular activities outside the classroom.

Communication

Parents are invited to communicate directly with the Whānau Leader responsible for their child, or with the Counsellor. Interviews with individual teachers must be arranged through the Principal or a Deputy Principal.

The College reception is open from 8:00 am to 4:30pm during the school terms. College newsletters are regularly sent by email.

Student Support Services

To ensure maximum academic progress, One Tree Hill College has developed a comprehensive pastoral care programme. All students are part of a whānau class within a whānau setting. Each whānau class is supervised by two Whānau Leaders. The Whānau Leaders and pastoral whānau teachers take a special interest in the attendance, welfare and progress of each of their students.

Year 9 students are in whānau classes together with help from Year 12 and 13 students. This 'Peer Support' programme is an example of how senior students can help Year 9 students to settle into secondary school, while at the same time developing their own leadership and personal skills.

There is a highly professional support service offered to students through the Student Services Centre. There are Counsellors, a Social Worker, Nurse and Attendance Officer.



Curriculum

We offer quality education to all our students covering all the essential learning areas. We have implemented the New Zealand Curriculum and have designed our teaching and learning programmes to enhance student achievement. Students are encouraged to strive for excellence by both studying in depth and by broadening their knowledge, interest and skills in a wide range of subjects. Our timetable is structured so that students can study subjects at different levels in the same year.

Attendance

Regular attendance is essential for success at school. Attendance is checked carefully every period by classroom teachers and at whānau time.

Environment

One Tree Hill College has an environment to be proud of. Inside, our refurbished classrooms and corridors have an art collection that surpasses that of any other school in the country. Collected over many years, it consists mainly of works by prominent New Zealand artists, but also includes student work of an extremely high quality. Outside, our gardens, spacious grounds and mature trees provide a pleasant environment for study, sport and recreation.

Our students will achieve excellence,
within a positive learning environment,
so that they develop into lifelong
learners who are motivated, respectful,
confident, connected and caring citizens.

Whaia e koe te iti kahurangi

Parent Donation and Fees

Parent Donation

The level of the school donation is kept to a minimum and the funds are used to provide some of the extras that are not covered by Government funding. We depend on all families donating as early as possible. In the case of new students, this donation could be paid on enrolment. As a guide, the 2018 donation will be:

- Single Child \$120.00 • Whole Family \$180.00

Course Fees

The course fees are for take-home classroom materials used and should be paid on enrolment or at the very beginning of the school year. All students are charged for materials used in practical classes such as Food and Design Technology.



One Tree Hill
COLLEGE

Our College Values

The values upon which the College operates are shown below. They are illustrated in the whānau colours which represent strong family values which are fundamental to our success at One Tree Hill College.

These values underpin everything we do at the College and encompass so many other areas which will be developed with the students, staff and community.

Excellence

Aspiration

Innovation

Respect

Responsibility



One Tree Hill
COLLEGE

Whānau Support

The Whānau House System

Miro

Hinau

Tawa

Kowhai

The Whānau House System is at the heart of One Tree Hill College and is the foundation of our holistic approach to student education. The whānau is a school within a school where students are part of a smaller group of 280 students rather than being one of 1100. Students are placed in a whānau where they become part of an extended family of teachers and students of all year levels and they remain in this whānau during their years at school, developing a sense of belonging and loyalty.

One Tree Hill College is designed with four whānau areas all adjoining the central Student Services Centre and Knowledge Centre. Each whānau contains specialist teaching rooms and general teaching classrooms surrounding a common space designed for student use. This layout is designed based on current educational research to make transition easier for Year 9 students beginning at the College for the first time. The whānau common area is a home away from home and provides a recreational living

space for students to gather in before and after school and during breaks in the school day. It is also the venue for weekly whānau assemblies where student successes are celebrated and daily events discussed.

Each whānau is led by two Whānau Leaders who are responsible for the pastoral care and academic monitoring of each student. The teachers in the whānau mentor students individually and are the people who know the students the best, remaining associated with the students and their families for the five years they are at One Tree Hill College. Where possible the College places siblings within the same whānau. The Whānau Leaders and whānau teachers are the primary contact point for families and they will be reporting regularly on all aspects of student progress.

Students make a contribution to their whānau, the College, the community, and develop leadership through the College's co-curricular programme and the whānau.

Peer Support

The Peer Support programme is based on the concept that students have a great deal to offer each other. Senior students are given training in leadership and communication skills. At the beginning of the school year, new Year 9 students are placed in small groups with trained seniors and the seniors help the new students find their way around the College and help them deal with the various problems they might encounter. Further sessions are held throughout the year on topics such as 'positive self esteem' or 'getting to know each other'.

Peer Support gives a Year 9 student a 'big brother or sister,' whom they know and trust, to talk over problems with, when they might be reluctant to approach a teacher. It also raises the self-esteem of the seniors and encourages them to act in a mature way.



Subjects & Courses



Our aim is to ensure that all students have courses that are relevant and that they acquire the best possible qualifications.

Year 9

All students need to get a good start at secondary school. In the junior school the emphasis is on learning good work habits and the skills necessary for success in senior work, and on improving literacy and numeracy. The Year 9 programme has many features which ensure that the needs of students of every ability are properly and thoroughly met.

To ensure a smooth transition from primary to secondary schooling, Year 9 students are kept in the same teaching group for most of the week, which ensures that each class is taught by a small group of teachers who will quickly get to know your child well. The Year 9 programme provides a firm foundation of basics while enabling all students to select other subjects in areas of interest.

All students study English, Mathematics, Science, Social Studies, Physical Education and Health for the whole year. They also have a choice of a variety of other subjects which allows them to pursue areas of special interest.

Year 9 Scholarships:

A number of Penrose Rotary Scholarships are offered to Year 9 students each year. Contact the College reception for application forms and details.

Year 10

The priority of Year 10 is to prepare students for the transition to the senior school. Option subjects build on the students experience while in Year 9.

All students study English, Mathematics, Science, Social Studies, Physical Education and Health. In addition to this they select option subjects to study. These are selected from Art, Commerce, Dance, Digital Technologies, Drama, DVC, Food, Media Studies, Music, Product Design, Spanish, Sports Academy, Te Reo Māori.

NOTE: The option subjects offered and periods allocated at Year 9 and 10 may change slightly depending on final roll numbers.

Academic Enrichment and Support

There are creative and critical thinking classes where students work at a more demanding level. There are also mixed ability classes with the focus on developing the essential learning skills.

There is English Language Support for students requiring it. There is also additional learning support given in literacy and numeracy for students who need extra assistance.

The Senior School

The senior school has four main features:

- Outstanding academic achievement at all three levels of NCEA.
- A strong academic strand which prepares students for University.
- A wide range of courses which are part of the Qualifications Framework. These courses allow students to gain credits in a number of employment-related areas. This gives those students a head start when moving to tertiary institutions after leaving the College.
- Students are able to study at different levels in the senior school according to their needs and ability.

Year 11

Students gain credits towards NCEA Level 1. All students must take English, Mathematics, and three other subjects – a total of five courses.



Year 12 and Year 13

Students gain credits towards NCEA Level 2 and NCEA Level 3 as well as towards a range of National Certificates in specialised areas such as Employment Skills, Computing, Tourism, Business Administration and Hospitality. These National Certificates enable students to begin study for a career pathway while still at school and allows them to build up a portfolio of useful qualifications. Students preparing for University have the opportunity to sit Scholarship examinations in a range of subjects in addition to gaining entrance to university through NCEA Level 3. Our aim is that every student leaving One Tree Hill College will have completed a National Certificate or will continue to do so either by further study or through meaningful employment.

NOTE: Final subject availability is not determined until late in the year and is driven by student choice and the size of the school roll.

Courses Available

Learning Area	Year 9	Year 10	NCEA Level 1	NCEA Level 2	NCEA Level 3
The Arts	Art Dance Drama Music	Art Dance Drama Music	Art Dance Drama Music	Art Design Art Painting Art Photography Dance Drama Music	Art Design Art Painting Art Photography Dance Drama Music
English	English	English Media Studies	English ESOL Media Studies	English ESOL Media Studies	English ESOL Media Studies
Health and Physical Education	Health and Physical Education Sports Academy	Health and Physical Education Sports Academy	Health Physical Education PE & Sport PE & Recreation	Health Physical Education PE & Sport PE & Recreation	Health Physical Education PE & Sport
Languages	Spanish Te Reo Māori	Spanish Te Reo Māori	Spanish Te Reo Māori	Spanish Te Reo Māori	Spanish Te Reo Māori
Mathematics	Mathematics	Mathematics	Mathematics	Mathematics	Calculus Statistics
Science	Science	Science	Science Science Biological Science Physical	Biology Chemistry Physics	Biology Chemistry Physics
Social Sciences	Commerce Social Studies	Commerce Social Studies	Accounting Business Studies Economics Geography History Social Studies Travel & Tourism	Accounting Business Studies Economics Geography History Pacific Studies Travel & Tourism	Accounting Business Studies Economics Geography History Pacific Studies Travel & Tourism
Technology	Digital Technologies Design & Visual Communication Food Product Design	Digital Technologies Design & Visual Communication Food Product Design	Digital Technologies Carpentry & Furniture Design & Visual Communication Food Product Design	Digital Technologies Carpentry & Furniture Design & Visual Communication Food Product Design	Digital Technologies Design & Visual Communication Food

NOTE: Courses offered may change due to student numbers.



One Tree Hill
COLLEGE

Student Leadership

Leadership is an important focus for all students at One Tree Hill College

We offer a range of leadership opportunities ranging from Head Boy and Head Girl to Whānau Class representatives and sports team captains.

Opportunities for student leadership include:

- Whānau Class Representative
- Board of Trustees Representative
- Student Council
- The Duke of Edinburgh's Hillary Award
- Pacific Pride
- Cultural Committee
- Environmental Committee
- Prefect
- Peer Supporter
- Head Boys and Girls
- Student Whānau Leaders
- Interact Club
- Sports Captains
- Junior Leadership Programme
- Music Leaders
- Library Monitors



Sports, Arts and Culture

One Tree Hill College provides opportunities in a wide range of different sports. Our students compete at a variety of levels ranging from social teams to those that compete at national and international levels. Elite performers are able to trial for our sports academies which are offered in Year 9 and Year 10. Students participate in the Auckland Secondary School competitions. Many of our top sports teams compete in Auckland 'A' grade competitions. The College has formed strong links with local sports clubs and some teams also compete in local sports leagues.

The College sends a number of teams each year to compete in regional and national tournaments.

Our sports department currently offers the following sports and activities.

Athletics, Badminton, Basketball, Baseball, Chess, Cricket, Football, Weightlifting, Hockey, Kilikiti, Netball, Orienteering, Rugby, Skiing, Softball, Swimming, Table Tennis, Tag, Tennis, Touch Rugby, Aussie Rules, Rugby League, Volleyball, Squash.



The College offers a comprehensive arts programme. Students are offered opportunities to participate in a wide range of activities including art exhibitions, musical groups and bands, dance and drama.

The Drama department performs a number of high quality productions each year. Music is thriving. Four choirs exist, ranging from all-comers' choirs to National Chorale Finale standard. Instrumental groups include orchestra, jazz group, rock band, piano duets, and many soloists. Students enjoy composition, arranging, musicology and performing arts. They perform in local and national competitions.

Cultural activities are an important element of life at One Tree Hill College. Each year the College sends a number of cultural groups to perform at the ASB Polyfest. Our cultural groups also perform at our annual cultural evening.

The Māori department offers many opportunities from Kapa Haka, Powhiri for special occasions, mentors who come and work with our senior students, and a vertical whānau class from years 11 to 13 within a stable environment.

Pacific Pride is a pacific leadership group that has been developing and nurturing young potential Pacific Island leaders at One Tree Hill College since 2007.

All students have the opportunity to participate in a wide range of cultural, sporting, musical and artistic activities.



Student Expectations



Uniform

- The uniform has been designed to be modern and attractive.
- It is compulsory for all students to be in uniform.
- The uniform is only available from:
The Warehouse, Sylvia Park Shopping Centre,
286 Mt Wellington Highway
Phone: 09 985 0510
- One Tree Hill College blazers, ties and scarves can be purchased at the College.
- A One Tree Hill College brand label appears on each uniform item. The brand label and crest make it distinctive as an item of One Tree Hill College uniform. Substituted uniform items will not be accepted.
- At all times the uniform should be worn in a manner which brings credit to the student wearing it and to One Tree Hill College.

Safe School Charter

One Tree Hill College is committed to providing a safe, secure and friendly environment for all students. All students are required to follow the articles of the Safe School Charter listed below:

1. I will behave in a positive manner.

This means I will not hit, assault, bully, intimidate or fight other people. I will also not encourage others to be violent.

2. I will use polite and friendly language.

This means that I will not verbally abuse people by using offensive, rude or obscene language or racially and sexually discriminating language. I will be considerate and respectful of others when I speak.

3. I will respect other people and their property.

This means I will not bully or hassle others, will not sexually harass others and will at all times act to stop people being disrespectful to others. I will not interfere with, damage or steal other people's property. I will not vandalise the College by breaking or defacing college property.

4. I will be fair to others.

This means that I will support others, will encourage them in their learning, and will acknowledge their contributions.

5. I will keep One Tree Hill College free of harmful substances.

This means I will never bring into the College, or use, drugs of any kind, alcohol in any form, cigarettes, tobacco or any other illegal substances, that may be harmful to myself or others.



One Tree Hill
COLLEGE



The College has outstanding levels of pastoral care. The strong, positive relationships which are developed between students, teachers and families enhance the levels of student achievement.

Art Collection

During the mid 2000's when One Tree Hill College was undergoing a major property redevelopment, one of the aims of the College was not only to create a modern learning environment for student centred learning, but to also create an environment to display its precious art collection.

The collection was started in 1969 by the then Principal, Murray Print, with the help of art teacher Wally Crossman. In a very creative move, it was decided that the collection be expanded through funds raised from selling pies and drinks at the school's tuck shop.

Over the years it has expanded to be a significant New Zealand collection, encompassing in excess of 200 art works, including works by Colin McCahon, Patrick Hanly, Max Gimblett, Dick Frizzell, John Reynolds, Gretchen Albrecht, W.A. Sutton, Robin White, Toss Woollaston, Allen Maddox, Don Peebles and Ralph Hotere. The art collection also includes a substantial collection of ceramics which are all on display in the College's Knowledge Centre, including various works by Len Castle and Barry Brickell.

Works are rotated so different pieces are on display in the highly secure reception and gallery space, while others are hung in the Knowledge Centre, staffroom, offices and corridors. There are very few spaces in the College where art is not on display.

The art collection is a vital part of the College for our students, staff and the community to enjoy. It has presented many opportunities to students, especially those studying art. The quality of art being produced by our students is exceptional and the inspiration drawn from the art collection is quite unique in a secondary school.

Students are very proud of the College, and equally as proud of the culture which exists here – the art collection is a big part of who we are. The College motto is to 'strive for higher things' and this is what we expect from every student in their academic, sporting, and cultural pursuits. The art collection is an example to us all of what New Zealanders can achieve when they dedicate themselves to excellence.





One Tree Hill College encourages
students to be involved in all
aspects of college life



International Students

One Tree Hill College welcomes international fee-paying students and offers places to students each year. Because there are students of many nationalities attending our college, international students feel at ease.

International students are given English language support through the extensive ESOL programme. The Dean of International Students monitors the academic achievement and attendance of the students. This involves maintaining contact with homestay families and families overseas to inform them of students' progress.

**FOR FURTHER INFORMATION AND
APPLICATION FORM, PLEASE CONTACT:**
Dean of International Students
+64 9 579 5049
international@onetreehillcollege.school.nz
www.onetreehillcollege.school.nz



Enrolment Scheme

In-Zone Enrolments

All students who live within the home zone described on our website (and shown on the map) shall be entitled to enrol at the school.

Proof of residence within the home zone will be required.

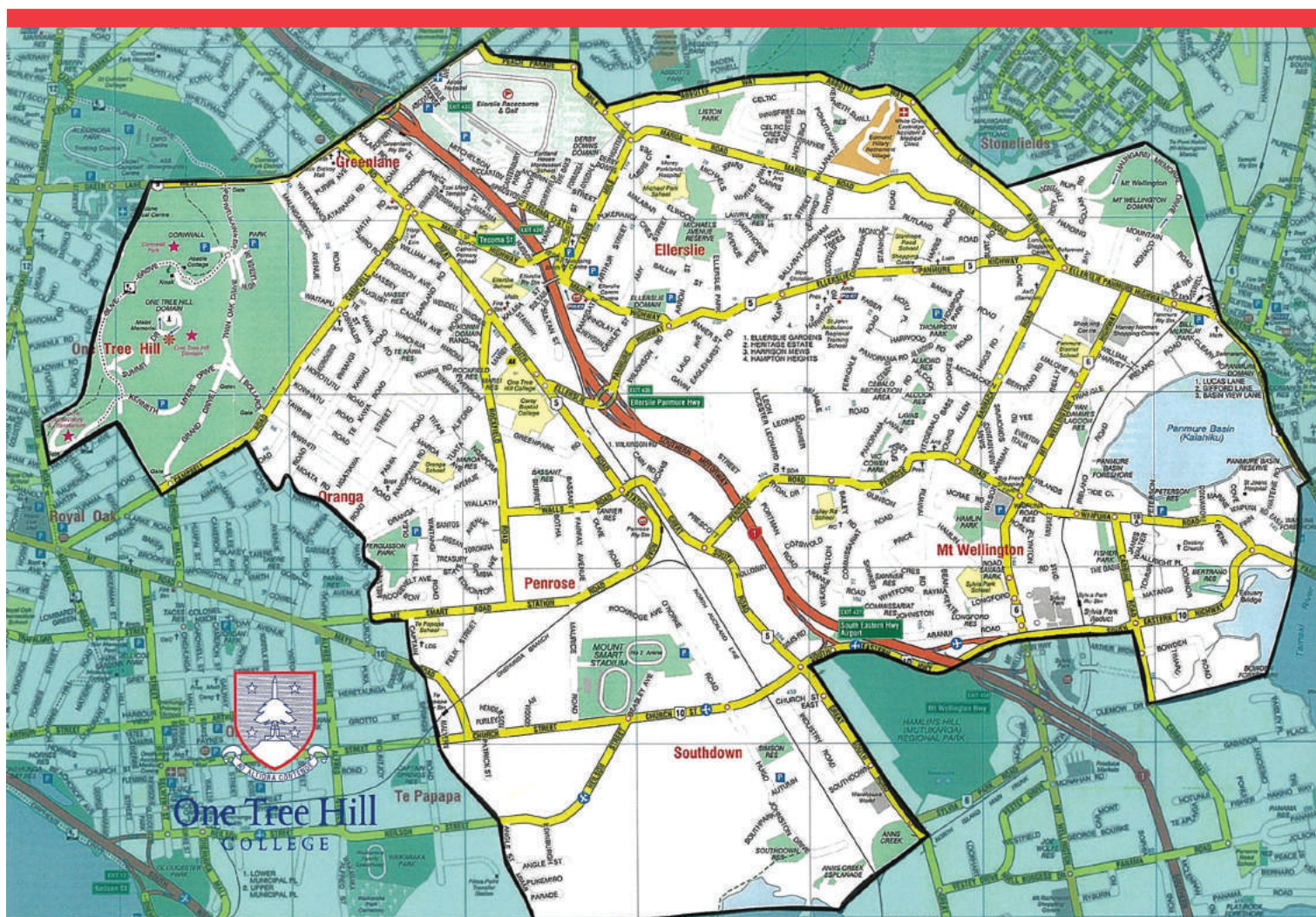
Each year, applications for enrolment in the following year from in-zone students will be sought by a date which will be published in a community newspaper circulating in the area served by the school. This will enable the Board to assess the number of places which can be made available to students who live outside the home zone.

Out of Zone Enrolments

Each year the board will determine the number of places which are likely to be available in the following year for the enrolment of students who live outside the home zone.

If there are more applicants in the second, third, fourth, or fifth priority groups than there are places available, selection within the priority group will be by a ballot conducted in accordance with instructions issued by the Secretary under Section 11G(1) of the Education Act 1989. Applicants seeking second or third priority status may be required to give proof of a sibling relationship.

Refer to the One Tree Hill College website for more information.



Preparing for Beyond

Careers Centre

The Careers Centre at our college has a nationally respected reputation for doing an excellent job of preparing students for their future. Every student is encouraged to move on to further education or employment and the Careers Centre works with students on both an individual and group basis to ensure this happens. The expertise within the Careers Centre ensures that students receive the best up-to-date service.

We operate a carefully structured career education programme which enables students at all levels to explore their career development. Students are invited to taste employment and training opportunities through the Gateway Programme to aid their career decision-making process.

The Careers Centre is packed with information outlining tertiary education, scholarships and employment and career opportunities throughout New Zealand. There are computers available for students to research information and staff are always on hand to help. Students are encouraged to identify their interests and skills and explore how these will lead them toward future careers pathways and opportunities. Support with CV writing, application forms and interview techniques is also provided.

Pathways Programme

Every student from Year 9 to Year 13 is actively involved in planning their future learning and career goals through our college's Pathways Programme. Each student is mentored by their whānau teacher who helps them to identify their strengths and set realistic goals for each year, and who then monitors their progress in both their academic and co-curricular involvement in the college. The student's Learning Plan is reviewed each term. Students are able to keep their learning plans, career planning documents and career information research electronically.

Families are welcome to contact the Careers Centre for information or guidance at any time, and we encourage parents to be involved in planning their child's future.



In Summary

One Tree Hill College is an innovative school with a commitment to students and their learning. It is a successful school staffed by capable and dedicated teachers. The facilities are modern and are situated within a beautiful and spacious environment. As New Zealand moves forward, schools have the task of preparing students for the challenges that they will meet.

One Tree Hill College is determined to ensure that it focuses on:

- Academic achievement and excellence to develop each student as an independent learner.
- Preparing students for life-long learning.
- Helping students to achieve their potential in a supportive learning environment.
- Encouraging students to develop a cultural identity and awareness.
- Giving students the opportunity to be involved in co-curricular activities to ensure that they develop as well-balanced individuals.
- Establishing high standards of behaviour and respect.
- Providing the appropriate level of support to respond to individual student needs.
- Providing the resources and management expertise to ensure that the very best education is delivered to the students in our care.



One Tree Hill
COLLEGE



Questions & Answers

How do we help new students to settle quickly into their new school?

One Tree Hill College has a comprehensive pastoral care programme to help students achieve success. The change from primary to secondary schooling can be quite difficult for many students as they leave a familiar and senior position in Year 8 to become junior students in Year 9. The junior programme ensures that the transition is as smooth as possible into one of our four whānau.

How can I check on my child's progress?

We welcome contact with families and believe that real progress can only be made when the College, home and student work closely together. Any of the following may be contacted depending on the nature of your concerns.

- The Parent Portal - this is an online facility for parents to check their child's academic progress.
- The Whānau Teacher or Whānau Leaders – can help with attendance matters and the overall needs of your child, including course or subject concerns. These people will usually be your first contact.
- The subject teachers – will be able to help with problems in their particular subject area. The Curriculum Leaders will be able to help with direction and focus in the academic areas.

- The Counsellor and Careers staff – can help with many family or school problems and give specialised help with career, course and transition decisions.

- The Principal and Deputy Principals – are responsible for the overall running of the college. All these people may be contacted through the College reception.

How does the College tell us about our child's progress?

If the College has concerns about your child we will contact you immediately. The progress of all students is checked early in the first term and brief reports are sent home. Families are contacted where needed. Detailed reports are issued in term three and term four. Parent-teacher meetings are held throughout the year.

Will my child be safe?

Yes! We believe that all students have a right to be safe at the College. Any situation which threatens students' safety or their ability to concentrate on school work is dealt with very quickly and firmly. We take this responsibility very seriously indeed and will not tolerate any bullying, violence or disrespect. One Tree Hill College utilises restorative practices to ensure any issues are dealt with quickly in a positive manner.



One Tree Hill

COLLEGE



421-451 Great South Road, Penrose
Auckland 1061, New Zealand
PO Box 17471, Greenlane, Auckland 1546
T +64 9 579 5049 F +64 9 579 5047
E office@onetreehillcollege.school.nz
www.onetreehillcollege.school.nz